



Slovenia

enforcement system e-manual





**This publication was funded
by the European Union's
Justice Programme
(2014-2020)**

Disclaimer:

The content of this publication represents the views of the authors, only, and is their sole responsibility. The European Commission does not accept any responsibility for use that may be made of the information it contains.

WHAT IS ENFORCED



Monetary Claims

01



Non-Monetary Claims

- Handing over movable assets
- Eviction
- Obligations to act, refrain from acting or suffer action
- Reinstatement of employee to work

02

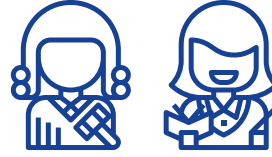
WHO ENFORCES



Private Judicial Officer (bailiff)

- Attachment of movable/intangible goods
- Enforcement against movable assets to settle pecuniary claims
- Attachment of motor vehicles/ships and vessels/airplanes
- Evictions
- Handing over movable assets
- Handing of children
- Physical (as opposed to Internet) forced auction sale of movable goods etc.

No competence in criminal matters



Enforcement Court

Judge

- Attachment/Enforcement of immovable property
- Enforcement against shares
- Physical (as opposed to Internet) forced auction sale of businesses/immovable goods
- Enforcement in reinstatement of employee to work
- Enforcement of obligations to act, refrain from acting or suffer action etc.

Court clerk

- Attachment of earnings/wages and other permanent pecuniary income
- Attachment on the bank account of the debtor/savings deposits and current accounts
- Attachment under the debtor's debtor etc.

ENFORCEMENT PROCEDURE



Creditor's application for enforcement to enforcement court



Enforceable title

- Enforceable court decision
- Court settlement
- Enforceable notary deed etc.



Enforcement

- Carried out by judicial officers or enforcement court, depending on the enforcement measures

HOW LONG DOES THE PROCESS LAST



Length depending on the type of enforcement

For example:

- Attachment of bank accounts or enforcement against wages: **less than a month**
- Enforcement against immovable property: between **one or two years**



HOW MUCH DOES THE PROCESS COST



Stage of granting of enforcement by enforcement court

- Initial fees: **55,00 EUR** or **44,00 EUR**
(if enforcement proposal is lodged electronically)
- Lawyer's fees: between **60,00 EUR** and **120,00 EUR**

Stage of execution of enforcement

Fees depending on the type of enforcement.

For example:

- Attachment of bank account/Enforcement against wages: between **44,00 EUR** and **175,00 EUR**
- Enforcement against movable assets/immovable property: between **500,00 EUR** and **2.000,00 EUR**

