



Poland

enforcement system e-manual





**This publication was funded
by the European Union's
Justice Programme
(2014-2020)**

Disclaimer:

The content of this publication represents the views of the authors, only, and is their sole responsibility. The European Commission does not accept any responsibility for use that may be made of the information it contains.

WHAT IS ENFORCED



Monetary Claims

01



Non-Monetary Claims

- Handing over movable assets
- Delivery of real estate/ship
- Eviction
- Obligations to act, refrain from acting or suffer action
- Reinstatement of employee to work

02

WHO ENFORCES



District Court

→ Actions specifically reserved for the court

01



Enforcement Agent

Enforcement actions

- Enforcement of court decisions (monetary/non-monetary claims, securing claims), other enforceable titles and writs of execution
- Enforcement of orders to secure evidence and provisions ordering the issue of evidence (intellectual property)
- Enforcement of orders to secure inheritance or making an inventory
- Tasks specified in other laws

Non-enforcement actions

- Service of documents
- SRecipient current address determination
- Drawing up a statement of facts
- Official supervision over voluntary public auctions

02

ENFORCEMENT PROCEDURE



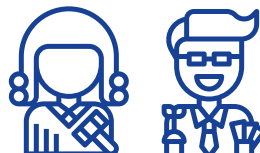
Enforceable title

- Writ of execution (final court decision, other judgment, notarial deed etc.) + enforceability clause (court deed)



Creditor's motion to initiate enforcement proceedings

- Alternatively, ex officio or on demand of competent authority



Court/Enforcement agent



Initiation of enforcement

- Via least burdensome method for the debtor

HOW LONG DOES THE PROCESS LAST



**Duration of proceeding varies,
depending on multiple factors**

**Increase of duration
between 6 and 12 months or more,
according to current statistics**

HOW MUCH DOES THE PROCESS COST



Enforcement agent's costs

Expenses

- Costs of delivery of correspondence
 - Advance payment of amount not exceeding PLN 60.00
- Receivables from experts and translators
- Costs of obtaining necessary documents or information etc.

Fees

- Relative (proportional)
 - Basic rate: 10 % of the value of the enforced cash
 - Range: PLN 150.00 - PLN 50,000.00
- Fixed

